

Montana

SYSTEM SEATING

MONTANA ACADEMY

Table of contents

**15 modules,
1 depth,
41 colours,
endless possibilities**

Expressing oneself is what Montana is all about. We want to give customers endless opportunities to create, frame, and tell their personal stories through clever design and superior craftsmanship.





System seating

Elevate your space with the Montana Seating System. Whether placed in an entryway, living room, or bedroom, these multifunctional pieces offer the perfect solution for tidying up clutter while providing comfortable seating for you and your guests.

The Seating System is manufactured in 12 mm MDF and can be configured freely in Design Pro by using components. The benches are only available on plinths in heights of 3 cm or 7 cm.

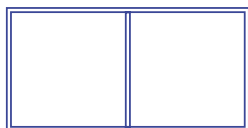
Coupling screws are available for a more coherent and stable bench.

Maximum weight capacity for the Seating System: 150 kg, evenly dispersed.

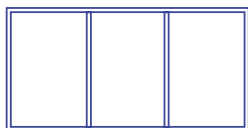


*12 /69.6 cm

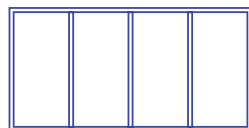
*6
35.4 cm



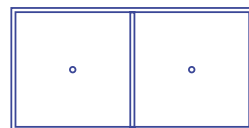
6112



6114

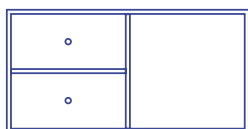


6113

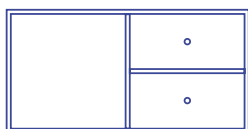


6228

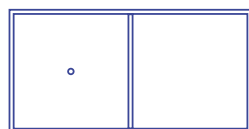
*6
35.4 cm



6324



6224



6126

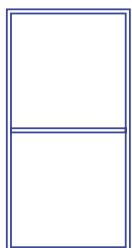


6226

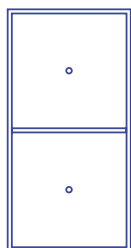
*6 /35.4 cm

*12 /69.6 cm

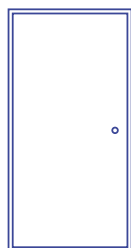
*12
69.6 cm



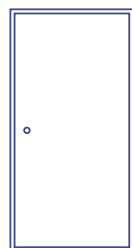
1261



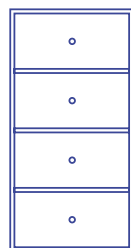
1464



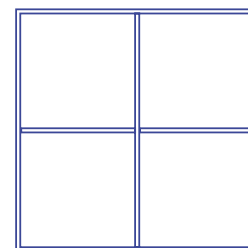
1162



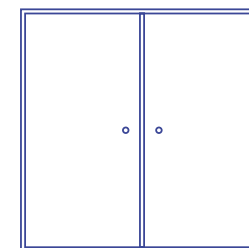
1165



1363



1112



1118

MONTANA SYSTEM SEATING

System Seating is available in depth 38 cm.



MONTANA SYSTEM SEATING

Benches are available on plinth in height 3 cm or 7 cm.



| | | | | | | |
|--|---|--|---|--|---|---|
| |  Pomelo |  White |  New White |  Snow | |  Vanilla |
|  Oyster |  Mist |  Nordic | |  Oat |  White Oak |  Camomile |
|  Flint | |  Clay |  Fjord |  Mushroom |  Ruby |  Acacia |
|  Azure |  Fennel |  Truffle |  Graphic |  Iris |  Rhubarb |  Cumin |
|  Monarch |  Parsley |  Coffee |  Coal | |  Rosehip |  Amber |
|  Juniper |  Pine |  Oregano |  Anthracite |  Masala |  Beetroot |  Hokkaido |
|  Shadow |  Black Jade | |  Black |  Black Oak |  Balsamic |  Hazelnut |



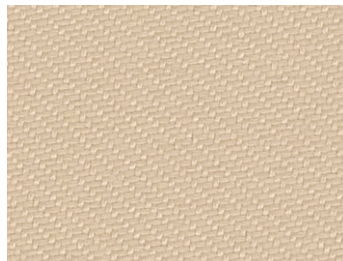
Cushions

Cushions for the Montana System Seating are 5 cm high and manufactured in firm foam.

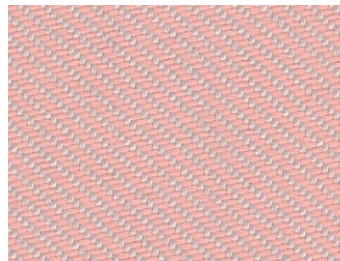
They are available in sizes 69 cm (*12), 139 cm (*24), and 208 cm (*36) in the upholstery textile Reflect from Kvadrat in four selected colours.

The cushion cover can be unzipped from the back. For care and treatment, please follow Kvadrat's textile care instructions. The cushions have an adhesive non-slip feature on the backside for better grip.

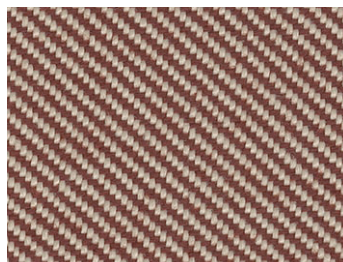
Cushions in special sizes and textiles are available with a surcharge.



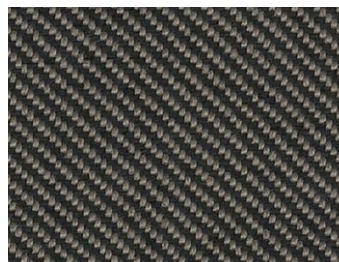
404
Reflect



614
Reflect



344
Reflect



184
Reflect

MONTANA SYSTEM SEATING

Basic cushion assortment in Reflect from Kvadrat

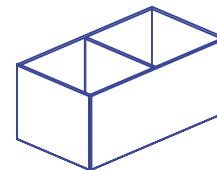


Living Things

Living Things in depth 38 cm is applicable to the System Seating configuration. The Living Things plant box is available for seating in 3 different sizes.

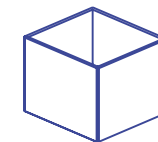
The plant boxes are made of 12 mm MDF and come in all of Montana's lacquer colours. The module has a reinforced base and can be configured on castors, legs, or stacked on top of other modules.

All Living Things modules include a plastic insert and adhesive non-slip pads.



LT3812

D 38 cm
W 69.9 cm
H 30 cm



LT3861

D 38 cm
W 35.4 cm
H 30 cm



LT3861

D 38 cm
W 35.4 cm
H 20 cm





EU Ecolabel

The EU Ecolabel is a mark of environmental excellence, recognised across Europe and worldwide.

It is awarded to products that meet high environmental standards throughout their lifecycle. These products generate less waste and emit less CO₂ during production, and they are durable, easy to repair, and recyclable.

The EU Ecolabel provides stringent guidelines and offers third-party controls and audits.



Unique selling points

- Danish design
- Made in Denmark
- 10 year guarantee
- EU Ecolabel
- Made to order
- High quality craftsmanship
- Environment-friendly
- Endless possibilities
- Total flexibility
- Timeless and modern



Always updated on

Montana Website

Montana Backroom

